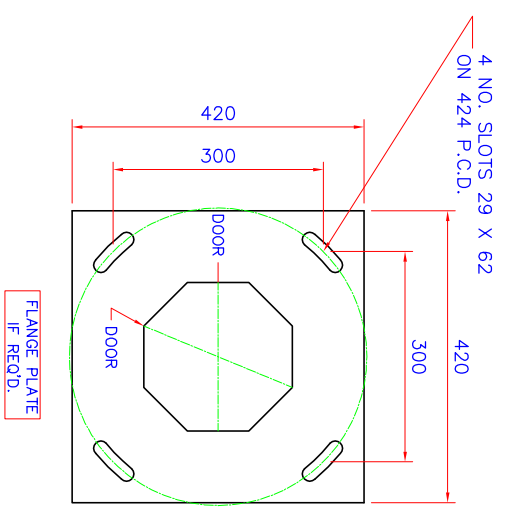
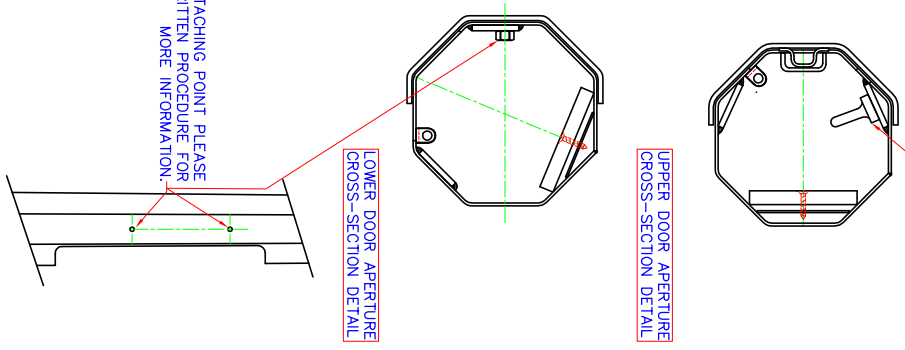
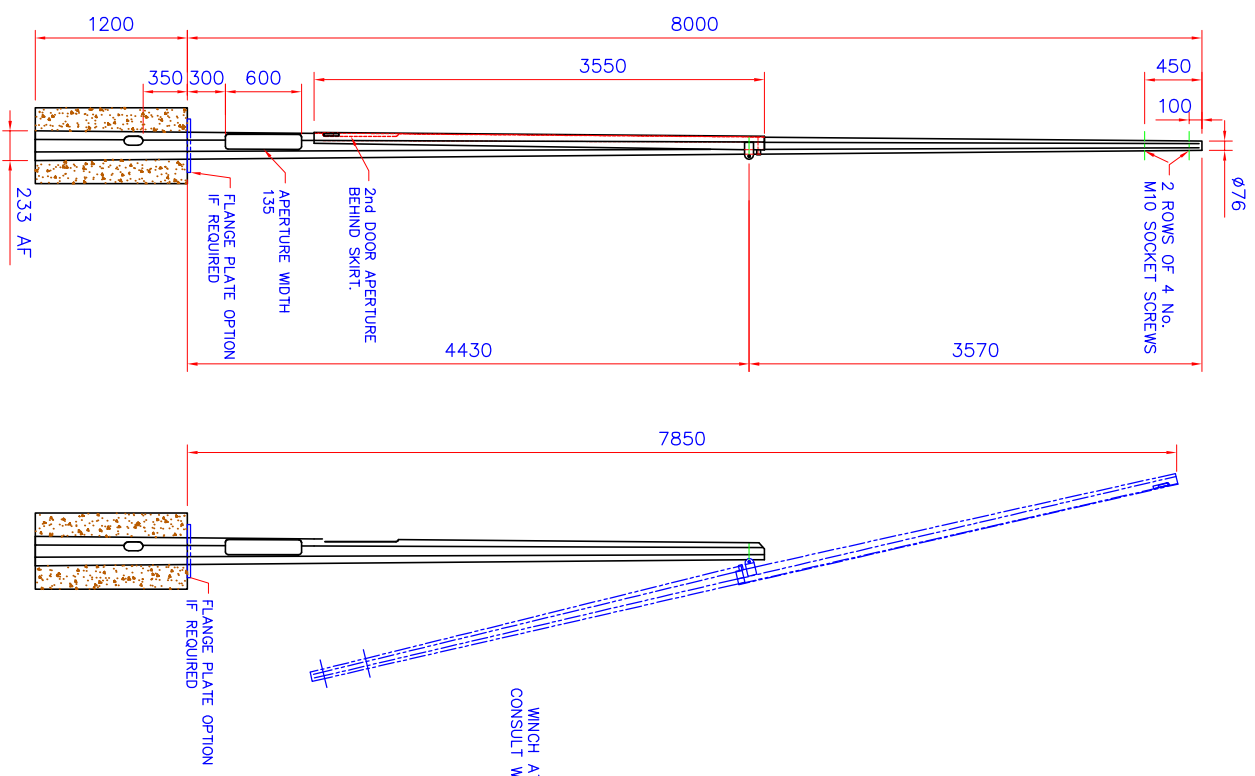


NOTE: A MINIMUM HEAD WEIGHT OF 10Kg. IS REQUIRED TO ALLOW THE HINGING OPERATION TO COMMENCE.

DO NOT SCALE

ALL DIMENSIONS IN MILLIMETRES UNLESS STATED OTHERWISE IF IN DOUBT ASK



- NOTES: -
1. RAISING & LOWERING OPERATION MUST NOT BE PERFORMED WITHOUT READING THE RAISING & LOWERING PROCEDURE.
 2. COUNTER BALANCE SECTION "SKIRT" IS ATTACHED TO THE INSIDE OF THE UPPER BASE COMPARTMENT VIA. A CHAIN. THE CHAIN MUST BE RE-ATTACHED AT THE END OF THE RAISING OPERATION - SEE RAISING & LOWERING PROCEDURE FOR DETAILS.
 3. WHITE LINE REQUIRED TO INDICATE GROUND LEVEL.
 4. FINISH: GALV TO BS EN 1461 + ADDITIONAL FINISH TO ORDER.
- PART CODE: 110802SMHH1000 - PLANTED
 PART CODE: 110802SMHH2000 - FLANGE PLATED

00	ISSUED FOR INFORMATION/APPROVAL	HM	--	09/3/06
REV.	DESCRIPTION	BY	CHK	DATE
MATERIAL:	S275JR	FINISH:	AS ABOVE	WEIGHT: 175 kg
TITLE: 8M OCT MID-HINGED HEAVY DUTY - UK MADE COLUMN				
DRAWN:	BS308, TOL: BS5649	NAME:	HM	DATE:
COPYRIGHT		DATE:	STAINTON	
THIS DRAWING IS THE PROPERTY OF STAINTON METAL COMPANY LIMITED & MUST NOT BE USED OR REPRODUCED WITHOUT STAINTON'S WRITTEN CONSENT		CHK'D/APP'D:	metal company limited	
COPYRIGHT © DESIGN RIGHT 1991	APP'D:	PRG. No.:	CC4327	
		Rev.:	00	
		SCALE:	NTS	
		Sht.:	1 of 1	
		TS17 9LT		
		TEL No.:	01642 766242	
		FAX No.:	01642 765509	